

# Hungaroring

## Euroformula Open

### Private Test - 4

## Results

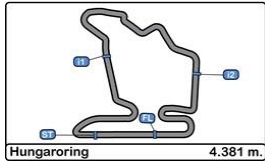
29/06/2017

Ord.	Nº Entrant	Nat.	Driver	Nat.	Cat.	Cla.	Chassis	Team	Laps	Best Time	Gap	Interval	Km/h
1	10 RP Motorsport	ITA	Harrison Scott	GBR			Dallara F312	RP Motorsport	18	1'36.704			163.091
2	16 Drivex School	ESP	Jake Dennis	GBR			Dallara F312	Drivex School	14	1'36.920	0"216	0"216	162.728
3	24 Carlin Motorsport	GBR	Ameya Vaidyanathan	IND			Dallara F312	Carlin Motorsport	23	1'36.993	0"289	0"073	162.606
4	1 Campos Racing	ESP	Raoul Hyman	ZAF			Dallara F312	Campos Racing	17	1'37.238	0"534	0"245	162.196
5	17 Carlin Motorsport	GBR	Devlin De Francesco	CAN	R	1º	Dallara F312	Carlin Motorsport	20	1'37.364	0"660	0"126	161.986
6	20 Fortec Motorsports	GBR	Petru Florescu	ROU	R	2º	Dallara F312	Fortec Motorsports	16	1'37.448	0"744	0"084	161.846
7	14 Carlin Motorsport	GBR	Tarun Reddy	IND	R	3º	Dallara F312	Carlin Motorsport	21	1'37.579	0"875	0"131	161.629
8	3 Campos Racing	ESP	Simo Laaksonen	FIN	R	4º	Dallara F312	Campos Racing	22	1'37.685	0"981	0"106	161.454
9	43 RACE	ESP	Pedro Cardoso	BRA			Dallara F312	Teo Martin Motorsport	21	1'37.743	1"039	0"058	161.358
10	2 Campos Racing	ESP	Thiago Vivacqua	BRA			Dallara F312	Campos Racing	21	1'37.794	1"090	0"051	161.274
11	42 RACE	ESP	Eliseo Martinez	ESP	R	5º	Dallara F312	Teo Martin Motorsport	21	1'37.868	1"164	0"074	161.152
12	34 Campos Racing	ESP	Matheus Iorio	BRA			Dallara F312	Campos Racing	19	1'37.874	1"170	0"006	161.142
13	18 Fortec Motorsports	GBR	Jannes Fittje	DEU	R	6º	Dallara F312	Fortec Motorsports	20	1'38.114	1"410	0"240	160.748
14	12 Drivex School	ESP	Christian Hahn	BRA			Dallara F312	Drivex School	14	1'38.207	1"503	0"093	160.595
15	11 RP Motorsport	ITA	Alex Karkosik	POL	R	7º	Dallara F312	RP Motorsport	13	1'39.303	2"599	1"096	158.823
16	8 RP Motorsport	ITA	Lodovico Laurini	ITA	R	8º	Dallara F312	RP Motorsport	17	1'39.546	2"842	0"243	158.435
17	22 BVM Racing	ITA	Daniil Pronenko	RUS			Dallara F312	BVM Racing	13	1'39.753	3"049	0"207	158.107

Published at:.....

Track Status **DRY**

Stewards:	Race Director:	Timekeeper: 
-----------	----------------	--

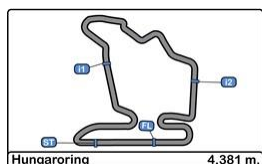


### Hungaroring Euroformula Open Private Test - 4

### LAP ANALYSIS

29/06/2017

Number	1			2			3			8			10		
Lap	Lap Time	Partial	Speed	Lap Time	Partial	Speed	Lap Time	Partial	Speed	Lap Time	Partial	Speed	Lap Time	Partial	Speed
1 <sup>a</sup> - 1	0'36.945	0'36.945	211.765	0'37.069	0'37.069	213.862	0'38.653	0'38.653	212.181	0'37.907	0'37.907	210.938	0'38.773	0'38.773	211.351
1 <sup>a</sup> - 2	1'12.769	0'35.824		1'12.356	0'35.287		1'16.479	0'37.826		1'15.591	0'37.684		1'15.636	0'36.863	
1 <sup>a</sup> - 3	1'39.858	0'27.089		1'39.823	0'27.467		1'45.044	0'28.565		1'43.718	0'28.127		1'43.777	0'28.141	
2 <sup>a</sup> - 1	0'36.747	0'36.747	213.439	0'36.799	0'36.799	213.862	0'39.514	0'39.514	197.441	0'37.126	0'37.126	212.181	0'36.753	0'36.753	210.938
2 <sup>a</sup> - 2	1'11.049	0'34.302		1'11.909	0'35.110		1'22.889	0'43.375		1'13.460	0'36.334		1'11.981	0'35.228	
2 <sup>a</sup> - 3	1'37.588	0'26.539		1'39.272	0'27.363		1'55.710	0'32.821		1'41.015	0'27.555		1'39.033	0'27.052	
3 <sup>a</sup> - 1	0'36.685	0'36.685	213.862	0'36.952	0'36.952	211.765	0'37.142	0'37.142	213.439	0'37.190	0'37.190	211.765	0'36.466	0'36.466	214.286
3 <sup>a</sup> - 2	1'16.635	0'39.950		1'12.016	0'35.064		1'12.448	0'35.306		1'12.923	0'35.733		1'11.526	0'35.060	
3 <sup>a</sup> - 3	1'44.523	0'27.888		1'39.161	0'27.145		1'39.574	0'27.126		1'41.183	0'28.260		1'41.023	0'29.497	
4 <sup>a</sup> - 1	0'36.706	0'36.706	212.181	0'36.909	0'36.909	213.862	0'36.818	0'36.818	213.439	0'37.014	0'37.014	212.599	0'36.628	0'36.628	214.286
4 <sup>a</sup> - 2	1'11.704	0'34.998		1'11.782	0'34.873		1'13.337	0'36.519		1'13.293	0'36.279		1'11.339	0'34.711	
4 <sup>a</sup> - 3	1'44.749	0'33.045	PIT	1'39.145	0'27.363		1'41.075	0'27.738		1'40.967	0'27.674		1'37.881	0'26.542	
5 <sup>a</sup> - 1	17'23.027	17'23.027		0'39.220	0'39.220	211.351	0'36.745	0'36.745	213.862	0'37.772	0'37.772	213.439	0'36.512	0'36.512	215.140
5 <sup>a</sup> - 2	17'59.985	0'36.958		1'15.476	0'36.256		1'12.362	0'35.617		1'13.804	0'36.032		1'11.034	0'34.522	
5 <sup>a</sup> - 3	18'28.962	0'28.977		1'48.281	0'32.805	PIT	1'48.422	0'36.060	PIT	1'41.241	0'27.437		1'38.094	0'27.060	
6 <sup>a</sup> - 1	0'37.070	0'37.070	210.527	6'35.683	6'35.683		6'43.713	6'43.713		0'37.214	0'37.214	213.862	0'36.533	0'36.533	216.433
6 <sup>a</sup> - 2	1'11.469	0'34.399		7'20.928	0'45.245		7'20.756	0'37.043		1'13.133	0'35.919		1'12.517	0'35.984	
6 <sup>a</sup> - 3	1'38.024	0'26.555		7'51.976	0'31.048		7'48.630	0'27.874		1'40.568	0'27.435		1'39.495	0'26.978	
7 <sup>a</sup> - 1	0'36.585	0'36.585	214.286	0'36.822	0'36.822	210.117	0'37.044	0'37.044	210.527	0'36.896	0'36.896	216.001	0'37.732	0'37.732	214.712
7 <sup>a</sup> - 2	1'11.108	0'34.523		1'11.789	0'34.967		1'12.136	0'35.092		1'12.818	0'35.922		1'15.072	0'37.340	
7 <sup>a</sup> - 3	1'37.801	0'26.693		1'38.858	0'27.069		1'39.358	0'27.222		1'40.300	0'27.482		1'46.897	0'31.825	PIT
8 <sup>a</sup> - 1	0'36.583	0'36.583	213.018	0'36.863	0'36.863	211.765	0'36.906	0'36.906	210.527	0'37.075	0'37.075	213.439	7'52.095	7'52.095	
8 <sup>a</sup> - 2	1'11.565	0'34.982		1'15.052	0'38.189		1'12.412	0'35.506		1'12.923	0'35.848		8'32.100	0'40.005	
8 <sup>a</sup> - 3	1'43.496	0'31.931	PIT	1'42.437	0'27.385		1'39.655	0'27.243		1'40.574	0'27.651		9'04.087	0'31.987	
9 <sup>a</sup> - 1	7'45.840	7'45.840		0'36.685	0'36.685	214.712	0'36.652	0'36.652	213.862	0'37.378	0'37.378	213.862	0'38.276	0'38.276	211.351
9 <sup>a</sup> - 2	8'24.138	0'38.298		1'11.864	0'35.179		1'11.760	0'35.108		1'13.826	0'36.448		1'16.328	0'38.052	
9 <sup>a</sup> - 3	8'52.591	0'28.453		1'38.799	0'26.935		1'38.900	0'27.140		1'53.741	0'39.915	PIT	1'43.396	0'27.068	
10 <sup>a</sup> - 1	0'36.719	0'36.719	212.599	0'37.716	0'37.716	210.527	0'36.667	0'36.667	213.018	18'45.033	18'45.033		0'36.782	0'36.782	213.439
10 <sup>a</sup> - 2	1'11.176	0'34.457		1'14.610	0'36.894		1'16.628	0'39.961		19'25.401	0'40.368		1'11.484	0'34.702	
10 <sup>a</sup> - 3	1'37.874	0'26.698		1'47.825	0'33.215	PIT	1'46.681	0'30.053		19'55.879	0'30.478		1'41.914	0'30.430	
11 <sup>a</sup> - 1	0'36.417	0'36.417	215.140	6'06.450	6'06.450		0'36.983	0'36.983	214.712	0'37.168	0'37.168	210.938	0'36.498	0'36.498	214.286
11 <sup>a</sup> - 2	1'10.516	0'34.099		6'41.574	0'35.124		1'13.985	0'37.002		1'12.716	0'35.548		1'12.087	0'35.589	
11 <sup>a</sup> - 3	1'37.238	0'26.722		7'08.631	0'27.057		1'41.923	0'27.938		1'40.032	0'27.316		1'39.199	0'27.112	
12 <sup>a</sup> - 1	0'36.391	0'36.391	215.569	0'36.731	0'36.731	212.181	0'36.874	0'36.874	213.018	0'44.830	0'44.830	213.862	0'36.979	0'36.979	212.599
12 <sup>a</sup> - 2	1'10.403	0'34.012		1'11.858	0'35.127		1'12.394	0'35.520		1'35.046	0'50.216		1'12.162	0'35.183	
12 <sup>a</sup> - 3	1'37.424	0'27.021		1'39.181	0'27.323		1'46.934	0'34.540	PIT	2'18.925	0'43.879	PIT	1'43.618	0'31.456	PIT
13 <sup>a</sup> - 1	0'38.771	0'38.771	213.862	0'39.907	0'39.907	211.351	6'30.143	6'30.143		4'22.843	4'22.843		14'40.678	14'40.678	
13 <sup>a</sup> - 2	1'19.468	0'40.697		1'17.754	0'37.847		7'10.501	0'40.358		4'59.431	0'36.588		15'18.241	0'37.563	
13 <sup>a</sup> - 3	1'47.286	0'27.818		1'50.058	0'32.304	PIT	7'38.506	0'28.005		5'26.785	0'27.354		15'45.541	0'27.300	
14 <sup>a</sup> - 1	0'39.978	0'39.978	213.018	6'17.642	6'17.642		0'37.075	0'37.075	212.181	0'36.785	0'36.785	213.862	0'36.869	0'36.869	214.286
14 <sup>a</sup> - 2	1'16.562	0'36.584		6'55.314	0'37.672		1'12.159	0'35.084		1'12.575	0'35.790		1'11.890	0'35.021	
14 <sup>a</sup> - 3	1'43.558	0'26.996		7'23.077	0'27.763		1'39.230	0'27.071		1'40.060	0'27.485		1'38.669	0'26.779	
15 <sup>a</sup> - 1	0'36.430	0'36.430	213.862	0'37.545	0'37.545	200.744	0'36.558	0'36.558	212.599	0'36.866	0'36.866	213.439	0'36.345	0'36.345	216.433
15 <sup>a</sup> - 2	1'10.800	0'34.370		1'13.845	0'36.300		1'11.117	0'34.559		1'12.292	0'35.426		1'10.488	0'34.143	
15 <sup>a</sup> - 3	1'37.580	0'26.780		1'40.706	0'26.861		1'37.910	0'26.793		1'39.546	0'27.254		1'36.959	0'26.471	
16 <sup>a</sup> - 1	0'39.205	0'39.205	214.712	0'36.632	0'36.632	213.862	0'36.338	0'36.338	214.286	0'36.771	0'36.771	215.140	0'36.368	0'36.368	215.569
16 <sup>a</sup> - 2	1'17.344	0'38.139		1'11.120	0'34.488		1'10.959	0'34.621		1'12.097	0'35.326		1'10.452	0'34.084	
16 <sup>a</sup> - 3	1'55.141	0'37.797	PIT	1'37.794	0'26.674		1'37.685	0'26.726		1'47.699	0'35.602	PIT	1'36.704	0'26.252	
17 <sup>a</sup> - 1				0'36.510	0'36.510	214.712	0'37.042	0'37.042	215.569				0'36.333	0'36.333	216.868
17 <sup>a</sup> - 2				1'10.890	0'34.380		1'14.375	0'37.333					1'10.887	0'34.554	
17 <sup>a</sup> - 3				1'37.887	0'26.997		1'42.436	0'28.061					1'50.065	0'39.178	PIT
18 <sup>a</sup> - 1				0'36.757	0'36.757	213.439	0'36.394	0'36.394	214.286						
18 <sup>a</sup> - 2				1'12.983	0'36.226		1'11.588	0'35.194							
18 <sup>a</sup> - 3				1'41.887	0'28.904		1'38.880	0'27.292							
19 <sup>a</sup> - 1				0'36.555	0'36.555	215.569	0'36.456	0'36.456	216.868						
19 <sup>a</sup> - 2				1'11.028	0'34.473		1'11.012	0'34.556							
19 <sup>a</sup> - 3				1'37.968	0'26.940		1'37.713	0'26.701							
20 <sup>a</sup> - 1				0'37.287	0'37.287	213.862	0'36.336	0'36.336	217.304						
20 <sup>a</sup> - 2				1'15.530	0'38.243		1'10.922	0'34.586							
20 <sup>a</sup> - 3				1'53.205	0'37.675	PIT	1'38.265	0'27.343							
21 <sup>a</sup> - 1							0'37.387	0'37.387	214.712						
21 <sup>a</sup> - 2							1'14.035	0'36.648							
21 <sup>a</sup> - 3							1'49.575	0'35.540	PIT						

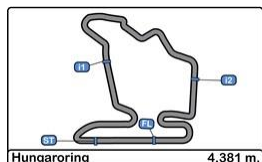


## Hungaroring Euroformula Open Private Test - 4

### LAP ANALYSIS

29/06/2017

Number	11			12			14			16			17			
	Lap	Lap Time	Partial	Speed	Lap Time	Partial	Speed	Lap Time	Partial	Speed	Lap Time	Partial	Speed	Lap Time	Partial	Speed
1 <sup>a</sup> - 1	0'37.869	0'37.869		214.712	4'42.781	4'42.781		0'36.921	0'36.921	211.351	0'38.584	0'38.584	206.107	0'36.761	0'36.761	212.599
1 <sup>a</sup> - 2	1'15.230	0'37.361			5'23.285	0'40.504		1'12.230	0'35.309		1'14.437	0'35.853		1'11.584	0'34.823	
1 <sup>a</sup> - 3	1'43.417	0'28.187			5'54.494	0'31.209		1'39.473	0'27.243		1'41.766	0'27.329		1'38.364	0'26.780	
2 <sup>a</sup> - 1	0'37.087	0'37.087		214.286	0'37.375	0'37.375	210.938	0'37.150	0'37.150	211.351	0'36.574	0'36.574	213.439	0'36.642	0'36.642	213.862
2 <sup>a</sup> - 2	1'13.939	0'36.852			1'14.315	0'36.940		1'16.241	0'39.091		1'10.670	0'34.096		1'12.167	0'35.525	
2 <sup>a</sup> - 3	1'41.835	0'27.896			1'43.211	0'28.896		1'43.706	0'27.465		1'37.367	0'26.697		1'38.860	0'26.693	
3 <sup>a</sup> - 1	0'36.992	0'36.992		215.569	0'37.091	0'37.091	210.117	0'36.729	0'36.729	213.439	0'37.633	0'37.633	217.743	0'36.546	0'36.546	214.286
3 <sup>a</sup> - 2	1'13.062	0'36.070			1'13.443	0'36.352		1'12.568	0'35.839		1'16.392	0'38.759		1'11.248	0'34.702	
3 <sup>a</sup> - 3	1'40.695	0'27.633			1'40.594	0'27.151		1'46.327	0'33.759		1'45.343	0'28.951		1'38.233	0'26.985	
4 <sup>a</sup> - 1	0'36.823	0'36.823		214.286	0'37.392	0'37.392	212.181	0'36.778	0'36.778	213.862	0'36.688	0'36.688	212.599	0'36.636	0'36.636	213.018
4 <sup>a</sup> - 2	1'13.394	0'36.571			1'12.488	0'35.096		1'12.092	0'35.314		1'10.972	0'34.284		1'11.307	0'34.671	
4 <sup>a</sup> - 3	1'41.445	0'28.051			1'39.932	0'27.444		1'39.497	0'27.405		1'37.948	0'26.976		1'38.129	0'26.822	
5 <sup>a</sup> - 1	0'37.011	0'37.011		215.140	0'37.266	0'37.266	211.351	0'36.764	0'36.764	213.439	0'36.533	0'36.533	213.862	0'36.554	0'36.554	212.181
5 <sup>a</sup> - 2	1'13.099	0'36.088			1'12.367	0'35.101		1'12.004	0'35.240		1'12.965	0'36.432		1'11.904	0'35.350	
5 <sup>a</sup> - 3	1'49.773	0'36.674	PIT		1'49.862	0'37.495	PIT	1'39.285	0'27.281		1'46.659	0'33.694	PIT	1'38.865	0'26.961	
6 <sup>a</sup> - 1	13'33.321	13'33.321			9'05.557	9'05.557		0'36.852	0'36.852	214.286	8'45.470	8'45.470		0'36.776	0'36.776	213.018
6 <sup>a</sup> - 2	14'12.309	0'38.988			9'43.034	0'37.477		1'24.421	0'47.569		9'57.026	1'11.556		1'12.099	0'35.323	
6 <sup>a</sup> - 3	14'41.110	0'28.801			10'11.541	0'28.507		2'09.076	0'44.655	PIT	10'49.132	0'52.106	PIT	1'47.607	0'35.508	PIT
7 <sup>a</sup> - 1	0'36.665	0'36.665		214.286	0'37.189	0'37.189	205.715	6'41.338	6'41.338		17'38.279	17'38.279		10'08.522	10'08.522	
7 <sup>a</sup> - 2	1'12.368	0'35.703			1'12.385	0'35.196		7'20.571	0'39.233		18'18.911	0'40.632		10'45.538	0'37.016	
7 <sup>a</sup> - 3	1'39.603	0'27.235			1'39.699	0'27.314		7'48.294	0'27.723		18'48.030	0'29.119		11'13.516	0'27.978	
8 <sup>a</sup> - 1	0'38.042	0'38.042		215.140	0'36.823	0'36.823	213.018	0'36.648	0'36.648	210.527	0'38.405	0'38.405	206.897	0'37.655	0'37.655	209.709
8 <sup>a</sup> - 2	1'13.466	0'35.424			1'11.671	0'34.848		1'12.104	0'35.456		1'15.753	0'37.348		1'12.675	0'35.020	
8 <sup>a</sup> - 3	1'40.483	0'27.017			1'38.762	0'27.091		1'39.049	0'26.945		1'43.956	0'28.203		1'39.425	0'26.750	
9 <sup>a</sup> - 1	0'36.908	0'36.908		213.439	0'36.780	0'36.780	213.439	0'36.698	0'36.698	213.018	0'36.413	0'36.413	215.140	0'36.544	0'36.544	211.765
9 <sup>a</sup> - 2	1'12.093	0'35.185			1'11.576	0'34.796		1'11.764	0'35.066		1'10.424	0'34.011		1'10.892	0'34.348	
9 <sup>a</sup> - 3	1'39.303	0'27.210			1'38.383	0'26.807		1'38.717	0'26.953		1'36.920	0'26.496		1'37.437	0'26.545	
10 <sup>a</sup> - 1	0'37.033	0'37.033		216.001	0'36.617	0'36.617	214.286	0'36.529	0'36.529	212.599	0'36.489	0'36.489	216.001	0'36.635	0'36.635	213.018
10 <sup>a</sup> - 2	1'15.057	0'38.024			1'11.491	0'34.874		1'11.435	0'34.906		1'10.537	0'34.048		1'11.098	0'34.463	
10 <sup>a</sup> - 3	1'52.067	0'37.010	PIT		1'38.207	0'26.716		1'38.664	0'27.229		1'37.261	0'26.724		1'37.583	0'26.485	
11 <sup>a</sup> - 1	16'21.998	16'21.998			0'36.466	0'36.466	215.140	0'47.146	0'47.146	213.439	0'42.412	0'42.412	213.018	0'36.561	0'36.561	213.439
11 <sup>a</sup> - 2	16'59.484	0'37.486			1'16.252	0'39.786		1'31.839	0'44.693		1'21.366	0'38.954		1'11.145	0'34.584	
11 <sup>a</sup> - 3	17'30.843	0'31.359			1'46.969	0'30.717		2'01.477	0'29.638		1'55.189	0'33.823		1'37.864	0'26.719	
12 <sup>a</sup> - 1	0'36.562	0'36.562		215.569	0'37.860	0'37.860	213.018	0'36.932	0'36.932	211.351	0'36.512	0'36.512	213.439	0'36.711	0'36.711	213.018
12 <sup>a</sup> - 2	1'14.203	0'37.641			1'17.558	0'39.698		1'11.781	0'34.849		1'10.519	0'34.007		1'11.151	0'34.440	
12 <sup>a</sup> - 3	1'58.084	0'43.881	PIT		1'46.243	0'28.685		1'38.709	0'26.928		1'36.995	0'26.476		1'37.624	0'26.473	
13 <sup>a</sup> - 1					0'37.226	0'37.226	212.599	0'43.837	0'43.837	207.294	0'36.281	0'36.281	215.140	0'36.347	0'36.347	216.001
13 <sup>a</sup> - 2					1'13.380	0'36.154		1'24.367	0'40.530		1'10.219	0'33.938		1'14.585	0'38.238	
13 <sup>a</sup> - 3					1'54.888	0'41.508	PIT	2'03.056	0'38.689	PIT	1'47.121	0'36.902	PIT	1'43.242	0'28.657	
14 <sup>a</sup> - 1								7'37.433	7'37.433					0'36.421	0'36.421	213.862
14 <sup>a</sup> - 2								8'20.189	0'42.756					1'10.942	0'34.521	
14 <sup>a</sup> - 3								8'52.853	0'32.664					1'37.639	0'26.697	
15 <sup>a</sup> - 1								0'40.223	0'40.223	187.827				0'36.341	0'36.341	215.140
15 <sup>a</sup> - 2								1'17.781	0'37.558					1'14.235	0'37.894	
15 <sup>a</sup> - 3								1'45.157	0'27.376					1'42.236	0'28.001	
16 <sup>a</sup> - 1								0'36.505	0'36.505	213.862				0'36.391	0'36.391	215.569
16 <sup>a</sup> - 2								1'11.099	0'34.594					1'11.125	0'34.734	
16 <sup>a</sup> - 3								1'37.919	0'26.820					1'37.651	0'26.526	
17 <sup>a</sup> - 1								0'36.450	0'36.450	215.140				0'36.615	0'36.615	214.712
17 <sup>a</sup> - 2								1'10.943	0'34.493					1'11.477	0'34.862	
17 <sup>a</sup> - 3								1'37.635	0'26.692					1'48.335	0'36.858	
18 <sup>a</sup> - 1								0'36.367	0'36.367	216.433				0'36.366	0'36.366	215.140
18 <sup>a</sup> - 2								1'10.783	0'34.416					1'10.811	0'34.445	
18 <sup>a</sup> - 3								1'37.579	0'26.796					1'37.364	0'26.553	
19 <sup>a</sup> - 1								0'36.239	0'36.239	216.868				0'45.341	0'45.341	214.712
19 <sup>a</sup> - 2								1'16.153	0'39.914					1'27.874	0'42.533	
19 <sup>a</sup> - 3								1'51.415	0'35.262					2'06.177	0'38.303	PIT
20 <sup>a</sup> - 1								0'36.690	0'36.690	213.439						
20 <sup>a</sup> - 2								1'16.351	0'39.661							
20 <sup>a</sup> - 3								1'52.813	0'36.462	PIT						
21 <sup>a</sup> - 1																
21 <sup>a</sup> - 2																
21 <sup>a</sup> - 3																

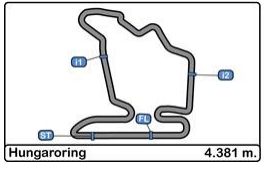


### Hungaroring Euroformula Open Private Test - 4

### LAP ANALYSIS

29/06/2017

Number	18			20			22			24			34			
	Lap	Lap Time	Partial	Speed	Lap Time	Partial	Speed	Lap Time	Partial	Speed	Lap Time	Partial	Speed	Lap Time	Partial	Speed
1 <sup>a</sup> - 1	0'37.040	0'37.040		209.709	0'38.272	0'38.272	207.693	0'37.259	0'37.259	210.117	0'38.408	0'38.408	197.081	0'42.265	0'42.265	209.303
1 <sup>a</sup> - 2	1'12.272	0'35.232			1'14.559	0'36.287		1'13.064	0'35.805		1'13.867	0'35.459		1'19.812	0'37.547	
1 <sup>a</sup> - 3	1'39.598	0'27.326			1'46.434	0'31.875		1'40.580	0'27.516		1'41.424	0'27.557		1'47.977	0'28.165	
2 <sup>a</sup> - 1	0'36.992	0'36.992		214.712	0'36.737	0'36.737	214.286	0'37.147	0'37.147	210.938	0'37.932	0'37.932	212.599	0'41.486	0'41.486	211.351
2 <sup>a</sup> - 2	1'15.034	0'38.042			1'11.246	0'34.509		1'26.896	0'49.749		1'13.707	0'35.775		1'19.596	0'38.110	
2 <sup>a</sup> - 3	1'43.399	0'28.365			1'38.208	0'26.962		1'54.640	0'27.744		1'42.346	0'28.639		1'56.052	0'36.456	PIT
3 <sup>a</sup> - 1	0'36.927	0'36.927		214.286	0'36.465	0'36.465	216.001	0'37.251	0'37.251	214.286	0'36.645	0'36.645	214.712	4'24.434	4'24.434	
3 <sup>a</sup> - 2	1'12.308	0'35.381			1'11.003	0'34.538		1'13.176	0'35.925		1'11.237	0'34.592		5'02.336	0'37.902	
3 <sup>a</sup> - 3	1'40.064	0'27.756			1'37.936	0'26.933		1'40.643	0'27.467		1'38.040	0'26.803		5'33.080	0'30.744	
4 <sup>a</sup> - 1	0'36.817	0'36.817		214.286	0'44.119	0'44.119	214.286	0'37.671	0'37.671	211.351	0'43.432	0'43.432	214.712	0'37.205	0'37.205	213.439
4 <sup>a</sup> - 2	1'11.982	0'35.165			1'23.812	0'39.693		1'13.856	0'36.185		1'21.609	0'38.177		1'12.180	0'34.975	
4 <sup>a</sup> - 3	1'39.384	0'27.402			1'56.673	0'32.861	PIT	1'41.734	0'27.878		1'48.124	0'26.515		1'39.321	0'27.141	
5 <sup>a</sup> - 1	0'36.566	0'36.566		215.569	11'30.205	11'30.205		0'37.224	0'37.224	212.181	0'36.689	0'36.689	214.712	0'37.115	0'37.115	213.439
5 <sup>a</sup> - 2	1'15.318	0'38.752			12'08.535	0'38.330		1'14.576	0'37.352		1'11.421	0'34.732		1'11.985	0'34.870	
5 <sup>a</sup> - 3	1'51.593	0'36.275		PIT	12'37.593	0'29.058		1'55.976	0'41.400	PIT	1'38.270	0'26.849		1'39.160	0'27.175	
6 <sup>a</sup> - 1	7'24.592	7'24.592			0'38.358	0'38.358	209.709	8'29.982	8'29.982		0'36.486	0'36.486	215.140	0'36.972	0'36.972	214.712
6 <sup>a</sup> - 2	8'00.756	0'36.164			1'14.620	0'36.262		9'09.978	0'39.996		1'11.198	0'34.712		1'15.662	0'38.690	
6 <sup>a</sup> - 3	8'28.520	0'27.764			1'42.525	0'27.905		9'37.989	0'28.011		1'43.483	0'32.285	PIT	1'43.188	0'27.526	
7 <sup>a</sup> - 1	0'36.893	0'36.893		214.286	0'36.779	0'36.779	212.599	0'37.333	0'37.333	210.527	5'40.765	5'40.765		0'37.233	0'37.233	
7 <sup>a</sup> - 2	1'12.124	0'35.231			1'11.429	0'34.650		1'12.912	0'35.579		6'20.250	0'39.485		1'13.951	0'36.718	
7 <sup>a</sup> - 3	1'39.339	0'27.215			1'38.377	0'26.948		1'40.364	0'27.452		6'49.421	0'29.171		1'46.286	0'32.335	PIT
8 <sup>a</sup> - 1	0'36.804	0'36.804		213.439	0'36.451	0'36.451	215.140	0'37.100	0'37.100	210.527	0'39.426	0'39.426	184.616	6'54.705	6'54.705	
8 <sup>a</sup> - 2	1'11.913	0'35.109			1'11.145	0'34.694		1'12.649	0'35.549		1'19.034	0'39.608		7'29.821	0'35.116	
8 <sup>a</sup> - 3	1'39.106	0'27.193			1'38.341	0'27.196		1'39.753	0'27.104		1'47.025	0'27.991		7'57.067	0'27.246	
9 <sup>a</sup> - 1	0'36.690	0'36.690		214.712	0'36.984	0'36.984	214.286	0'37.313	0'37.313	212.181	0'36.839	0'36.839	212.181	0'37.097	0'37.097	212.599
9 <sup>a</sup> - 2	1'11.704	0'35.014			1'15.438	0'38.454		1'12.949	0'35.636		1'11.743	0'34.904		1'11.843	0'34.746	
9 <sup>a</sup> - 3	1'38.694	0'26.990			1'47.633	0'32.195	PIT	1'40.261	0'27.312		1'38.462	0'26.719		1'39.054	0'27.211	
10 <sup>a</sup> - 1	0'36.583	0'36.583		216.433	6'37.136	6'37.136		0'37.023	0'37.023	214.286	0'36.544	0'36.544	215.140	0'37.078	0'37.078	212.599
10 <sup>a</sup> - 2	1'13.574	0'36.991			7'14.547	0'37.411		1'12.582	0'35.559		1'13.896	0'37.352		1'12.345	0'35.267	
10 <sup>a</sup> - 3	1'46.738	0'33.164		PIT	7'43.030	0'28.483		1'39.838	0'27.256		1'41.888	0'27.992		1'39.645	0'27.300	
11 <sup>a</sup> - 1	8'58.772	8'58.772			0'37.623	0'37.623	210.938	0'36.871	0'36.871	213.439	0'36.736	0'36.736	212.599	0'37.196	0'37.196	210.938
11 <sup>a</sup> - 2	9'36.148	0'37.376			1'13.468	0'35.845		1'12.637	0'35.766		1'11.127	0'34.391		1'12.277	0'35.081	
11 <sup>a</sup> - 3	10'04.195	0'28.047			1'41.453	0'27.985		1'39.843	0'27.206		1'37.561	0'26.434		1'39.411	0'27.134	
12 <sup>a</sup> - 1	0'37.174	0'37.174		208.495	0'36.495	0'36.495	213.439	0'39.840	0'39.840	213.018	0'36.221	0'36.221	214.712	0'37.095	0'37.095	213.862
12 <sup>a</sup> - 2	1'12.523	0'35.349			1'10.749	0'34.254		1'18.618	0'38.778		1'10.850	0'34.629		1'12.090	0'34.995	
12 <sup>a</sup> - 3	1'39.562	0'27.039			1'37.448	0'26.699		1'57.194	0'38.576	PIT	1'39.446	0'28.596		1'43.173	0'31.083	PIT
13 <sup>a</sup> - 1	0'36.535	0'36.535		214.286	0'36.463	0'36.463	215.140				0'36.487	0'36.487	214.286	9'45.838	9'45.838	
13 <sup>a</sup> - 2	1'11.603	0'35.068			1'10.807	0'34.344					1'11.464	0'34.977		10'23.035	0'37.197	
13 <sup>a</sup> - 3	1'38.511	0'26.908			1'37.596	0'26.789					1'44.151	0'32.687	PIT	10'51.343	0'28.308	
14 <sup>a</sup> - 1	0'36.710	0'36.710		213.862	0'40.317	0'40.317	212.599				8'07.306	8'07.306		0'37.858	0'37.858	212.599
14 <sup>a</sup> - 2	1'11.330	0'34.620			1'18.995	0'38.678					8'45.890	0'38.584		1'14.213	0'36.355	
14 <sup>a</sup> - 3	1'38.114	0'26.784			1'46.504	0'27.509					9'15.107	0'29.217		1'41.212	0'26.999	
15 <sup>a</sup> - 1	0'36.570	0'36.570		214.286	0'36.565	0'36.565	214.712				0'39.282	0'39.282	188.812	0'36.770	0'36.770	214.286
15 <sup>a</sup> - 2	1'11.462	0'34.892			1'15.923	0'39.358					1'15.942	0'36.660		1'11.203	0'34.433	
15 <sup>a</sup> - 3	1'38.332	0'26.870			1'50.385	0'34.462	PIT				1'43.780	0'27.838		1'37.874	0'26.671	
16 <sup>a</sup> - 1	0'36.859	0'36.859		214.712							0'36.618	0'36.618	213.862	0'36.565	0'36.565	215.569
16 <sup>a</sup> - 2	1'14.836	0'37.977									1'11.599	0'34.981		1'11.597	0'35.032	
16 <sup>a</sup> - 3	1'48.048	0'33.212		PIT							1'38.406	0'26.807		1'39.236	0'27.639	
17 <sup>a</sup> - 1	6'19.996	6'19.996									0'36.307	0'36.307	214.712	0'36.719	0'36.719	213.439
17 <sup>a</sup> - 2	6'59.536	0'39.540									1'10.686	0'34.379		1'11.217	0'34.498	
17 <sup>a</sup> - 3	7'27.121	0'27.585									1'37.205	0'26.519		1'38.097	0'26.880	
18 <sup>a</sup> - 1	0'36.667	0'36.667		215.140							0'39.814	0'39.814	214.712	0'38.222	0'38.222	213.439
18 <sup>a</sup> - 2	1'11.774	0'35.107									1'18.468	0'38.654		1'15.268	0'37.046	
18 <sup>a</sup> - 3	1'39.017	0'27.243									1'45.526	0'27.058		1'47.624	0'32.356	PIT
19 <sup>a</sup> - 1	0'36.646	0'36.646		215.569							0'36.263	0'36.263	215.569			
19 <sup>a</sup> - 2	1'11.470	0'34.824									1'10.644	0'34.381				
19 <sup>a</sup> - 3	1'48.039	0'36.569		PIT							1'36.993	0'26.349				
20 <sup>a</sup> - 1											0'36.179	0'36.179	216.868			
20 <sup>a</sup> - 2											1'18.303	0'42.124				
20 <sup>a</sup> - 3											1'46.600	0'28.297				
21 <sup>a</sup> - 1											0'36.537	0'36.537	214.286			
21 <sup>a</sup> - 2											1'16.035	0'39.498				
21 <sup>a</sup> - 3											1'46.574	0'30.539				



**Hungaroring  
Euroformula Open  
Private Test - 4**

**LAP ANALYSIS**

29/06/2017

Number	18			20			22			24			34		
Lap	Lap Time	Partial	Speed	Lap Time	Partial	Speed	Lap Time	Partial	Speed	Lap Time	Partial	Speed	Lap Time	Partial	Speed
22 <sup>a</sup> - 1										0'36.431	0'36.431	213.862			
22 <sup>a</sup> - 2										1'10.858	0'34.427				
22 <sup>a</sup> - 3										1'49.660	0'38.802	PIT			

Ideal Lap	
0'36.535	0'36.535
1'11.155	0'34.620
1'37.939	0'26.784

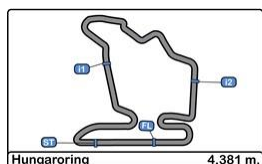
Ideal Lap	
0'36.451	0'36.451
1'10.705	0'34.254
1'37.404	0'26.699

Ideal Lap	
0'36.871	0'36.871
1'12.420	0'35.549
1'39.524	0'27.104

Ideal Lap	
0'36.179	0'36.179
1'10.558	0'34.379
1'36.907	0'26.349

Ideal Lap	
0'36.565	0'36.565
1'10.998	0'34.433
1'37.669	0'26.671

Ideal Best Lap	
0'36.179	0'36.179
1'10.117	0'33.938
1'36.369	0'26.252

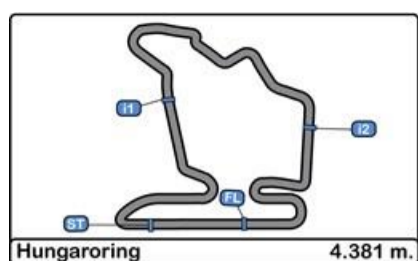


## Hungaroring Euroformula Open Private Test - 4

### LAP ANALYSIS

29/06/2017

Number	42			43		
	Lap Time	Partial	Speed	Lap Time	Partial	Speed
1 <sup>a</sup> - 1	0'37.984	0'37.984	210.117	0'39.745	0'39.745	211.765
1 <sup>a</sup> - 2	1'16.448	0'38.464		1'15.649	0'35.904	
1 <sup>a</sup> - 3	1'44.548	0'28.100		1'45.501	0'29.852	
2 <sup>a</sup> - 1	0'37.081	0'37.081	212.181	0'37.477	0'37.477	211.765
2 <sup>a</sup> - 2	1'12.733	0'35.652		1'13.193	0'35.716	
2 <sup>a</sup> - 3	1'39.872	0'27.139		1'40.869	0'27.676	
3 <sup>a</sup> - 1	0'36.912	0'36.912	213.439	0'36.815	0'36.815	214.286
3 <sup>a</sup> - 2	1'12.034	0'35.122		1'11.896	0'35.081	
3 <sup>a</sup> - 3	1'43.843	0'31.809		1'39.280	0'27.384	
4 <sup>a</sup> - 1	0'38.587	0'38.587	203.390	0'37.030	0'37.030	214.286
4 <sup>a</sup> - 2	1'15.006	0'36.419		1'12.160	0'35.130	
4 <sup>a</sup> - 3	1'42.808	0'27.802		1'39.495	0'27.335	
5 <sup>a</sup> - 1	0'36.809	0'36.809	212.599	0'36.861	0'36.861	214.286
5 <sup>a</sup> - 2	1'15.238	0'38.429		1'11.876	0'35.015	
5 <sup>a</sup> - 3	1'43.731	0'28.493		1'39.236	0'27.360	
6 <sup>a</sup> - 1	0'36.790	0'36.790	212.599	0'36.926	0'36.926	215.140
6 <sup>a</sup> - 2	1'12.189	0'35.399		1'12.218	0'35.292	
6 <sup>a</sup> - 3	1'39.288	0'27.099		1'43.179	0'30.961	PIT
7 <sup>a</sup> - 1	0'38.071	0'38.071	213.018	7'44.840	7'44.840	
7 <sup>a</sup> - 2	1'15.309	0'37.238		8'20.138	0'35.298	
7 <sup>a</sup> - 3	1'51.454	0'36.145	PIT	8'47.308	0'27.170	
8 <sup>a</sup> - 1	7'03.517	7'03.517		0'36.885	0'36.885	211.765
8 <sup>a</sup> - 2	7'42.346	0'38.829		1'12.096	0'35.211	
8 <sup>a</sup> - 3	8'11.136	0'28.790		1'39.037	0'26.941	
9 <sup>a</sup> - 1	0'37.475	0'37.475	210.117	0'36.862	0'36.862	213.862
9 <sup>a</sup> - 2	1'13.586	0'36.111		1'11.341	0'34.479	
9 <sup>a</sup> - 3	1'41.417	0'27.831		1'38.264	0'26.923	
10 <sup>a</sup> - 1	0'36.841	0'36.841	212.181	0'36.820	0'36.820	212.181
10 <sup>a</sup> - 2	1'12.167	0'35.326		1'11.275	0'34.455	
10 <sup>a</sup> - 3	1'39.338	0'27.171		1'38.059	0'26.784	
11 <sup>a</sup> - 1	0'36.537	0'36.537	212.181	0'36.734	0'36.734	214.286
11 <sup>a</sup> - 2	1'11.334	0'34.797		1'11.401	0'34.667	
11 <sup>a</sup> - 3	1'38.332	0'26.998		1'38.427	0'27.026	
12 <sup>a</sup> - 1	0'36.457	0'36.457	212.599	0'36.801	0'36.801	213.862
12 <sup>a</sup> - 2	1'11.187	0'34.730		1'11.749	0'34.948	
12 <sup>a</sup> - 3	1'38.315	0'27.128		1'43.045	0'31.296	PIT
13 <sup>a</sup> - 1	0'39.894	0'39.894	210.117	10'31.245	10'31.245	
13 <sup>a</sup> - 2	1'17.566	0'37.672		11'08.268	0'37.023	
13 <sup>a</sup> - 3	1'45.846	0'28.280		11'35.715	0'27.447	
14 <sup>a</sup> - 1	0'38.858	0'38.858	212.599	0'36.979	0'36.979	212.181
14 <sup>a</sup> - 2	1'16.706	0'37.848		1'11.483	0'34.504	
14 <sup>a</sup> - 3	1'52.622	0'35.916	PIT	1'38.272	0'26.789	
15 <sup>a</sup> - 1	10'42.323	10'42.323		0'37.646	0'37.646	215.569
15 <sup>a</sup> - 2	11'22.791	0'40.468		1'13.086	0'35.440	
15 <sup>a</sup> - 3	11'57.197	0'34.406	PIT	1'39.964	0'26.878	
16 <sup>a</sup> - 1	3'18.305	3'18.305		0'36.595	0'36.595	214.286
16 <sup>a</sup> - 2	3'55.612	0'37.307		1'10.934	0'34.339	
16 <sup>a</sup> - 3	4'24.170	0'28.558		1'37.788	0'26.854	
17 <sup>a</sup> - 1	0'36.797	0'36.797	212.599	0'36.721	0'36.721	215.569
17 <sup>a</sup> - 2	1'11.828	0'35.031		1'18.902	0'42.181	
17 <sup>a</sup> - 3	1'38.966	0'27.138		1'54.071	0'35.169	
18 <sup>a</sup> - 1	0'36.517	0'36.517	213.018	0'36.732	0'36.732	214.712
18 <sup>a</sup> - 2	1'11.453	0'34.936		1'11.127	0'34.395	
18 <sup>a</sup> - 3	1'38.184	0'26.731		1'37.965	0'26.838	
19 <sup>a</sup> - 1	0'36.470	0'36.470	214.286	0'36.548	0'36.548	214.712
19 <sup>a</sup> - 2	1'11.061	0'34.591		1'11.040	0'34.492	
19 <sup>a</sup> - 3	1'37.868	0'26.807		1'37.743	0'26.703	
20 <sup>a</sup> - 1	0'40.171	0'40.171	215.140	0'36.450	0'36.450	217.304
20 <sup>a</sup> - 2	1'19.418	0'39.247		1'10.793	0'34.343	
20 <sup>a</sup> - 3	1'55.861	0'36.443	PIT	1'41.132	0'30.339	PIT
21 <sup>a</sup> - 1						
21 <sup>a</sup> - 2						
21 <sup>a</sup> - 3						

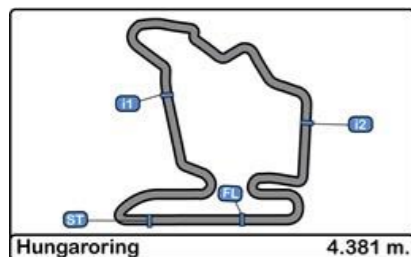


**Hungaroring**  
**Euroformula Open**  
**Private Test - 4**

**Best Sectors Results**

29/06/2017

Sector - 1			Sector - 2			Sector - 3			Ideal Lap vs Best Lap		
Ord.	Nº Driver	Time	Nº Driver	Time	Nº Driver	Time	Ord.	Nº Driver	Ideal Lap	Best Lap	Ord.
1	24 Ameya Vaidyanathan	36.179	16 Jake Dennis	33.938	10 Harrison Scott	26.252	1	10 Harrison Scott	1'36.669	1'36.704	1
2	14 Tarun Reddy	36.239	1 Raoul Hyman	34.012	24 Ameya Vaidyanathan	26.349	2	16 Jake Dennis	1'36.695	1'36.920	2
3	16 Jake Dennis	36.281	10 Harrison Scott	34.084	17 Devlin De Francesco	26.473	3	24 Ameya Vaidyanathan	1'36.907	1'36.993	3
4	10 Harrison Scott	36.333	20 Petru Florescu	34.254	16 Jake Dennis	26.476	4	1 Raoul Hyman	1'36.942	1'37.238	4
5	3 Simo Laaksonen	36.336	43 Pedro Cardoso	34.339	1 Raoul Hyman	26.539	5	17 Devlin De Francesco	1'37.162	1'37.364	5
6	17 Devlin De Francesco	36.341	17 Devlin De Francesco	34.348	34 Matheus Iorio	26.671	6	14 Tarun Reddy	1'37.347	1'37.579	7
7	1 Raoul Hyman	36.391	24 Ameya Vaidyanathan	34.379	2 Thiago Vivacqua	26.674	7	20 Petru Florescu	1'37.404	1'37.448	6
8	43 Pedro Cardoso	36.450	2 Thiago Vivacqua	34.380	14 Tarun Reddy	26.692	8	43 Pedro Cardoso	1'37.492	1'37.743	9
9	20 Petru Florescu	36.451	14 Tarun Reddy	34.416	20 Petru Florescu	26.699	9	2 Thiago Vivacqua	1'37.564	1'37.794	10
10	42 Eliseo Martinez	36.457	34 Matheus Iorio	34.433	3 Simo Laaksonen	26.701	10	3 Simo Laaksonen	1'37.593	1'37.685	8
11	12 Christian Hahn	36.466	3 Simo Laaksonen	34.556	43 Pedro Cardoso	26.703	11	34 Matheus Iorio	1'37.669	1'37.874	12
12	2 Thiago Vivacqua	36.510	42 Eliseo Martinez	34.591	12 Christian Hahn	26.716	12	42 Eliseo Martinez	1'37.779	1'37.868	11
13	18 Jannes Fittje	36.535	18 Jannes Fittje	34.620	42 Eliseo Martinez	26.731	13	18 Jannes Fittje	1'37.939	1'38.114	13
14	11 Alex Karkosik	36.562	12 Christian Hahn	34.796	18 Jannes Fittje	26.784	14	12 Christian Hahn	1'37.978	1'38.207	14
15	34 Matheus Iorio	36.565	11 Alex Karkosik	35.185	11 Alex Karkosik	27.017	15	11 Alex Karkosik	1'38.764	1'39.303	15
16	8 Lodovico Laurini	36.771	8 Lodovico Laurini	35.326	22 Daniil Pronenko	27.104	16	8 Lodovico Laurini	1'39.351	1'39.546	16
17	22 Daniil Pronenko	36.871	22 Daniil Pronenko	35.549	8 Lodovico Laurini	27.254	17	22 Daniil Pronenko	1'39.524	1'39.753	17



**Hungaroring**  
**Euroformula Open**  
**Private Test - 4**

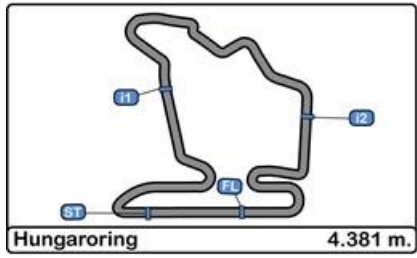
**Best Top Speeds**

29/06/2017

Ord.	Nº	Entrant	Nat.	Driver	Nat.	Cat.	Cla.	Chassis	Team	Top 1		Top 2		Top 3		Top 4		Top 5		Avg.
										Km/h	Lap	Km/h	Lap	Km/h	Lap	Km/h	Lap	Km/h	Lap	
1	16	Drivex School	ESP	Jake Dennis	GBR			Dallara F312		217.742	4	216.000	11	215.139	10	215.139	14	213.861	6	215.576
2	3	Campos Racing	ESP	Simo Laaksonen	FIN	R	1º	Dallara F312		217.304	21	216.867	20	215.569	18	214.712	12	214.712	22	215.833
3	43	RACE	ESP	Pedro Cardoso	BRA			Dallara F312		217.304	21	215.569	18	215.569	16	215.139	7	214.712	19	215.659
4	10	RP Motorsport	ITA	Harrison Scott	GBR			Dallara F312		216.868	18	216.433	16	216.433	7	215.569	17	215.139	6	216.088
5	24	Carlin Motorsport	GBR	Ameya Vaidyanathan	IND			Dallara F312		216.868	21	215.569	20	215.139	7	215.139	11	214.712	13	215.485
6	14	Carlin Motorsport	GBR	Tarun Reddy	IND	R	2º	Dallara F312		216.867	20	216.433	19	215.140	18	214.286	7	213.861	17	215.317
7	18	Fortec Motorsports	GBR	Jannes Fittje	DEU	R	3º	Dallara F312		216.433	11	215.569	20	215.569	6	215.139	19	214.712	3	215.484
8	8	RP Motorsport	ITA	Lodovico Laurini	ITA	R	4º	Dallara F312		216.000	8	215.139	17	213.861	7	213.861	10	213.861	13	214.545
9	11	RP Motorsport	ITA	Alex Karkosik	POL	R	5º	Dallara F312		216.000	11	215.569	4	215.569	13	215.140	6	215.140	9	215.483
10	17	Carlin Motorsport	GBR	Devlin De Francesco	CAN	R	6º	Dallara F312		216.000	14	215.569	17	215.140	16	215.139	19	214.712	18	215.312
11	20	Fortec Motorsports	GBR	Petru Florescu	ROU	R	7º	Dallara F312		216.000	4	215.140	14	215.139	9	214.712	16	214.286	3	215.055
12	1	Campos Racing	ESP	Raoul Hyman	ZAF			Dallara F312		215.569	13	215.139	12	214.712	17	214.286	8	213.861	4	214.713
13	2	Campos Racing	ESP	Thiago Vivacqua	BRA			Dallara F312		215.569	20	214.712	10	214.712	18	213.861	5	213.861	17	214.543
14	34	Campos Racing	ESP	Matheus Iorio	BRA			Dallara F312		215.569	17	214.712	7	214.286	16	213.861	13	213.439	6	214.373
15	12	Drivex School	ESP	Christian Hahn	BRA			Dallara F312		215.139	12	214.286	11	213.439	10	213.018	9	213.018	13	213.780
16	42	RACE	ESP	Eliseo Martinez	ESP	R	8º	Dallara F312		215.139	21	214.286	20	213.439	4	213.018	8	213.018	19	213.780
17	22	BVM Racing	ITA	Daniil Pronenko	RUS			Dallara F312		214.286	11	214.286	4	213.439	12	213.018	13	212.181	10	213.442





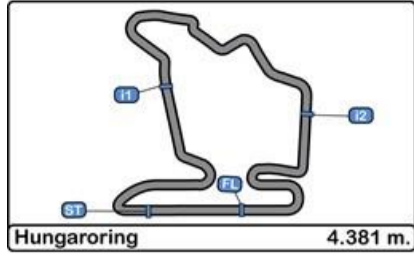


## Hungaroring Euroformula Open Private Test - 4

### Fastest Lap Sequence

29/06/2017

Time of Day	Session Time	Nº	Entrant	Nat.	Driver	Nat.	Cat.	Chassis	Team	Time	Km/h	Lap
16:04'12.219	3'24.394	18	Fortec Motorsports	GBR	Jannes Fittje	DEU	R	Dallara F312	Fortec Motorsports	1'39.598	158.353	2
16:05'06.286	4'18.489	14	Carlin Motorsport	GBR	Tarun Reddy	IND	R	Dallara F312	Carlin Motorsport	1'39.473	158.552	2
16:06'58.802	6'10.943	10	RP Motorsport	ITA	Harrison Scott	GBR		Dallara F312	RP Motorsport	1'39.033	159.256	3
16:08'32.984	7'45.253	24	Carlin Motorsport	GBR	Ameya Vaidyanathan	IND		Dallara F312	Carlin Motorsport	1'38.040	160.869	4
16:08'54.277	8'06.520	1	Campos Racing	ESP	Raoul Hyman	ZAF		Dallara F312	Campos Racing	1'37.588	161.614	3
16:10'39.407	9'51.547	16	Drivex School	ESP	Jake Dennis	GBR		Dallara F312	Drivex School	1'37.367	161.981	3
16:44'55.423	44'07.582	24	Carlin Motorsport	GBR	Ameya Vaidyanathan	IND		Dallara F312	Carlin Motorsport	1'37.205	162.251	18
16:48'17.876	47'30.101	24	Carlin Motorsport	GBR	Ameya Vaidyanathan	IND		Dallara F312	Carlin Motorsport	1'36.993	162.606	20
16:48'47.360	47'59.535	16	Drivex School	ESP	Jake Dennis	GBR		Dallara F312	Drivex School	1'36.920	162.728	10
16:51'52.138	51'04.420	10	RP Motorsport	ITA	Harrison Scott	GBR		Dallara F312	RP Motorsport	1'36.704	163.091	17

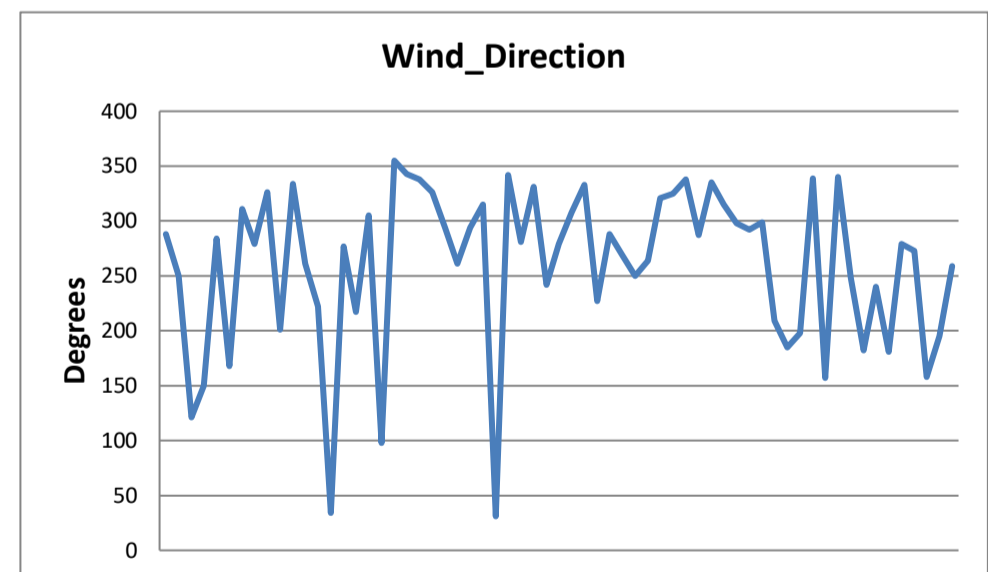
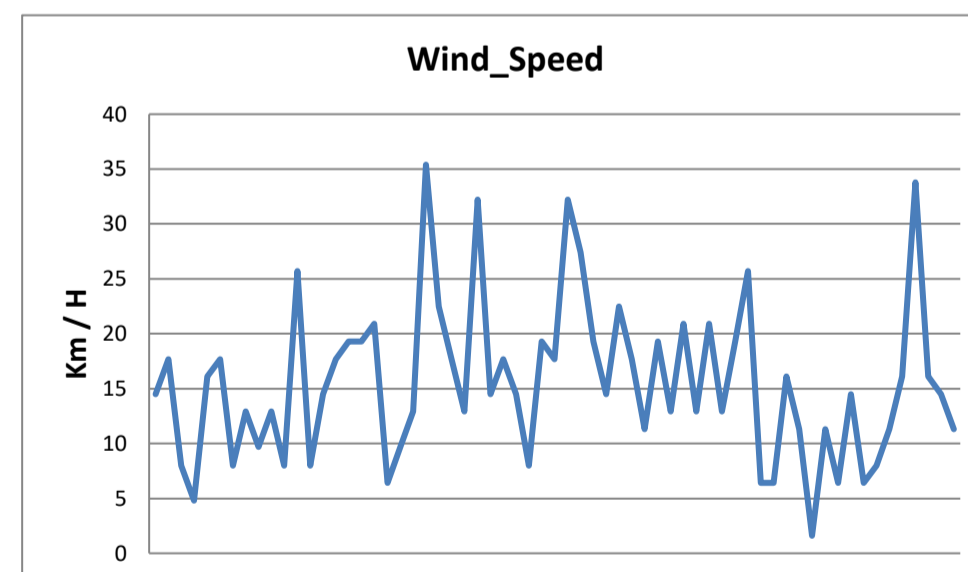
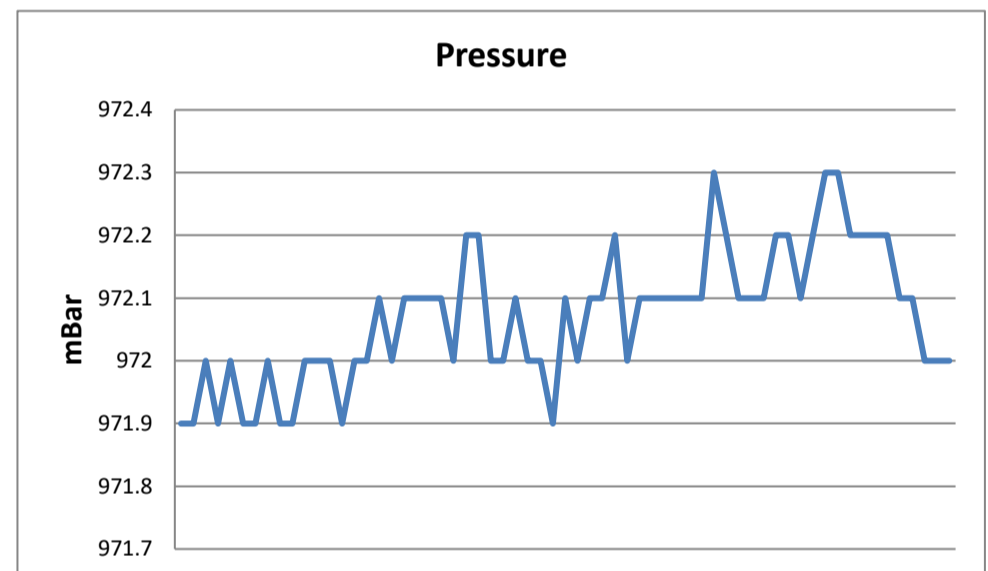
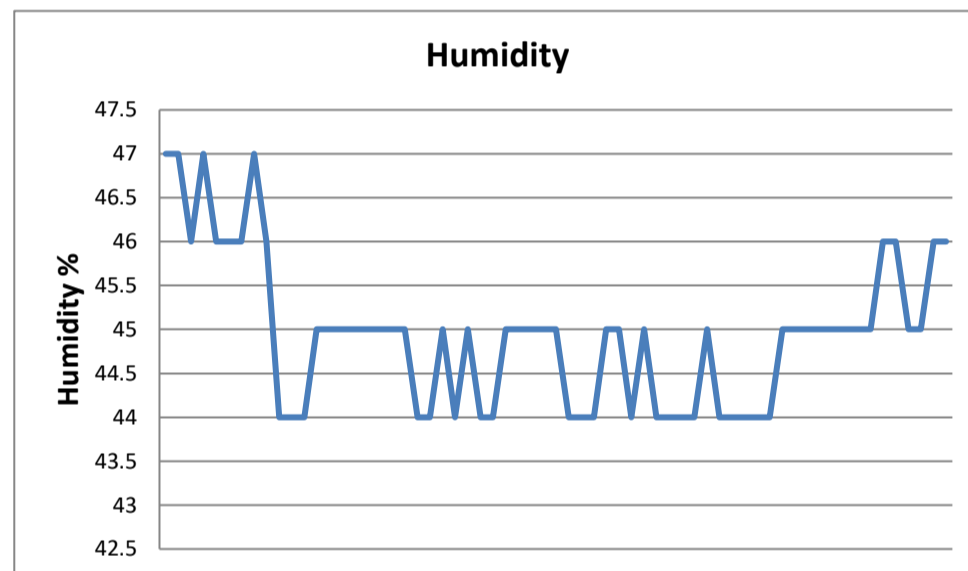
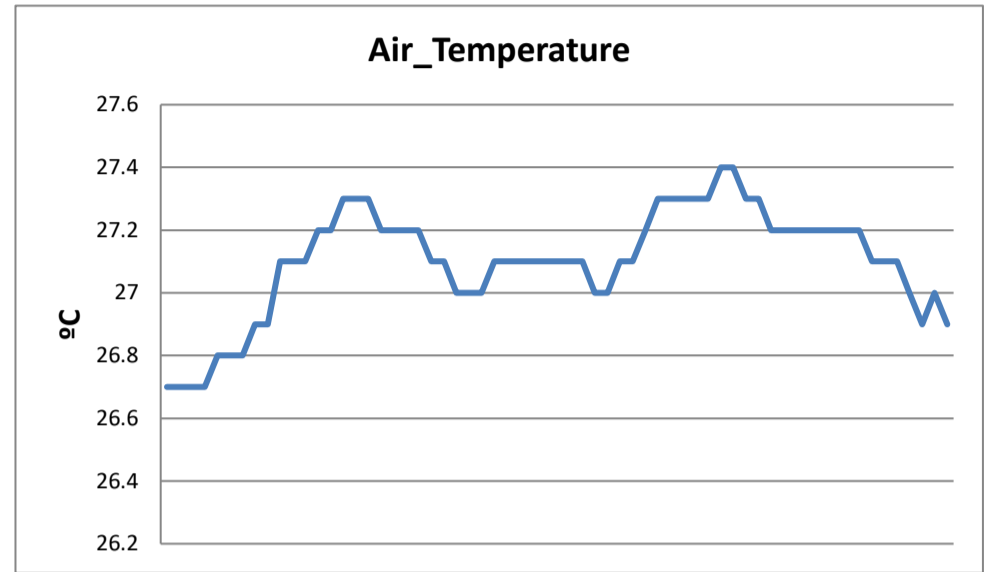
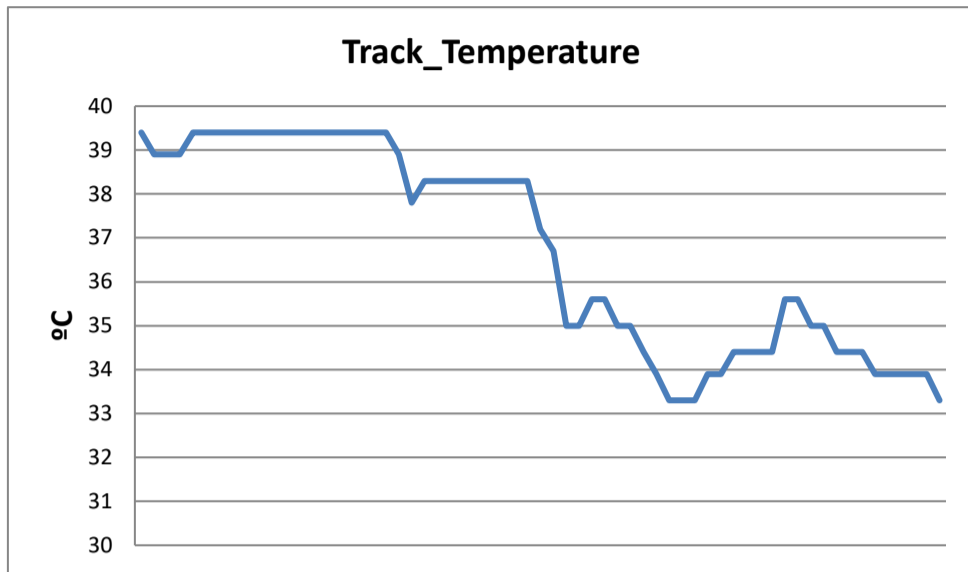


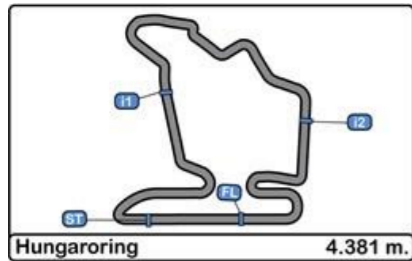
**Hungaroring  
Euroformula Open  
Private Test - 4**

**Weather Report**

29/06/2017

**Track Status DRY**





**Hungaroring**  
**Euroformula Open**

**PRIVATE TESTS RESULTS**

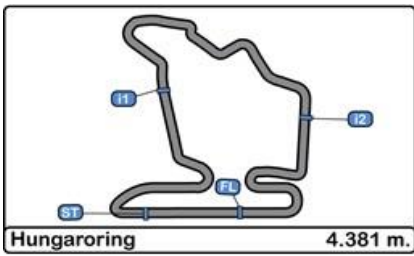
29/06/2017

Ord.	Nº	Entrant	Nat.	Driver	Nat.	Cat.	Cla.	Chassis	Team	Laps	Laps1	BL1	Time-1	Laps2	BL2	Time-2	Laps	BL3	Time-3	Laps4	BL4	Time-4	Best	Km/h
1	16	Drivex School	ESP	Jake Dennis	GBR			Dallara F312	Drivex School	74	27	25	1'39.662	15	14	1'37.005	18	17	1'36.440	14	10	1'36.920	<b>1'36.440</b>	163.538
2	17	Carlin Motorsport	GBR	Devlin De Francesco	CAN	R	1º	Dallara F312	Carlin Motorsport	99	41	37	1'39.126	19	10	1'37.949	19	12	1'36.552	20	19	1'37.364	<b>1'36.552</b>	163.348
3	10	RP Motorsport	ITA	Harrison Scott	GBR			Dallara F312	RP Motorsport	74	29	28	1'38.762	16	12	1'37.934	11	7	1'37.120	18	17	1'36.704	<b>1'36.704</b>	163.091
4	24	Carlin Motorsport	GBR	Ameya Vaidyanathan	IND			Dallara F312	Carlin Motorsport	107	42	40	1'39.284	21	16	1'37.728	21	18	1'38.043	23	20	1'36.993	<b>1'36.993</b>	162.606
5	18	Fortec Motorsports	GBR	Jannes Fittje	DEU	R	2º	Dallara F312	Fortec Motorsports	92	33	32	1'38.263	21	20	1'38.453	18	17	1'37.058	20	15	1'38.114	<b>1'37.058</b>	162.497
6	1	Campos Racing	ESP	Raoul Hyman	ZAF			Dallara F312	Campos Racing	59	18	17	1'38.369	9	2	1'38.491	15	14	1'37.121	17	12	1'37.238	<b>1'37.121</b>	162.391
7	14	Carlin Motorsport	GBR	Tarun Reddy	IND	R	3º	Dallara F312	Carlin Motorsport	94	36	35	1'39.436	18	17	1'37.952	19	17	1'37.139	21	19	1'37.579	<b>1'37.139</b>	162.361
8	11	RP Motorsport	ITA	Alex Karkosik	POL	R	4º	Dallara F312	RP Motorsport	71	25	24	1'40.084	17	9	1'39.662	16	15	1'37.283	13	10	1'39.303	<b>1'37.283</b>	162.121
9	20	Fortec Motorsports	GBR	Petru Florescu	ROU	R	5º	Dallara F312	Fortec Motorsports	63	23	22	1'38.419	13	10	1'38.952	11	10	1'37.287	16	13	1'37.448	<b>1'37.287</b>	162.114
10	3	Campos Racing	ESP	Simo Laaksonen	FIN	R	6º	Dallara F312	Campos Racing	74	20	14	1'50.923	14	13	1'38.732	18	10	1'37.435	22	17	1'37.685	<b>1'37.435</b>	161.868
11	2	Campos Racing	ESP	Thiago Vivacqua	BRA			Dallara F312	Campos Racing	78	28	26	1'38.815	16	7	1'38.985	13	12	1'37.580	21	17	1'37.794	<b>1'37.580</b>	161.627
12	43	RACE	ESP	Pedro Cardoso	BRA			Dallara F312	Teo Martin Motorsport	88	36	32	1'39.510	13	11	1'38.767	18	15	1'37.701	21	20	1'37.743	<b>1'37.701</b>	161.427
13	34	Campos Racing	ESP	Matheus Iorio	BRA			Dallara F312	Campos Racing	73	26	24	1'39.529	13	11	1'38.866	15	14	1'37.852	19	16	1'37.874	<b>1'37.852</b>	161.178
14	42	RACE	ESP	Eliseo Martinez	ESP	R	7º	Dallara F312	Teo Martin Motorsport	91	39	37	1'40.012	15	10	1'38.831	16	13	1'39.083	21	20	1'37.868	<b>1'37.868</b>	161.152
15	12	Drivex School	ESP	Christian Hahn	BRA			Dallara F312	Drivex School	61	35	34	1'39.507	12	11	1'39.039				14	11	1'38.207	<b>1'38.207</b>	160.595
16	22	BVM Racing	ITA	Daniil Pronenko	RUS			Dallara F312	BVM Racing	68	29	27	1'41.783	12	10	1'40.860	14	13	1'39.482	13	9	1'39.753	<b>1'39.482</b>	158.537
17	8	RP Motorsport	ITA	Lodovico Laurini	ITA	R	8º	Dallara F312	RP Motorsport	61	25	23	1'44.158	14	7	1'40.476	5	5	1'40.051	17	16	1'39.546	<b>1'39.546</b>	158.435

Published at:.....

<p><b>Stewards:</b></p>	<p><b>Race Director:</b></p>	<p><b>Timekeeper:</b></p> 
-------------------------	------------------------------	---





## Hungaroring Euroformula Open

### Event Maximum Speed

29/06/2017

Ord.	Nº	Entrant	Nat.	Driver	Nat.	Cat.	Cla.	Chassis	Team	Km/h	Lap	Session
1	2	Campos Racing	ESP	Thiago Vivacqua	BRA			Dallara F312	Campos Racing	219.513	28	Private Test - 1
2	11	RP Motorsport	ITA	Alex Karkosik	POL	R	1º	Dallara F312	RP Motorsport	219.068	9	Private Test - 3
3	20	Fortec Motorsports	GBR	Petru Florescu	ROU	R	2º	Dallara F312	Fortec Motorsports	218.624	19	Private Test - 1
4	24	Carlin Motorsport	GBR	Ameya Vaidyanathan	IND			Dallara F312	Carlin Motorsport	218.624	42	Private Test - 1
5	3	Campos Racing	ESP	Simo Laaksonen	FIN	R	3º	Dallara F312	Campos Racing	218.182	11	Private Test - 3
6	43	RACE	ESP	Pedro Cardoso	BRA			Dallara F312	Teo Martin Motorsport	218.182	9	Private Test - 3
7	16	Drivex School	ESP	Jake Dennis	GBR			Dallara F312	Drivex School	217.743	7	Private Test - 3
8	18	Fortec Motorsports	GBR	Jannes Fittje	DEU	R	4º	Dallara F312	Fortec Motorsports	217.743	10	Private Test - 3
9	1	Campos Racing	ESP	Raoul Hyman	ZAF			Dallara F312	Campos Racing	217.742	4	Private Test - 3
10	10	RP Motorsport	ITA	Harrison Scott	GBR			Dallara F312	RP Motorsport	217.742	5	Private Test - 3
11	14	Carlin Motorsport	GBR	Tarun Reddy	IND	R	5º	Dallara F312	Carlin Motorsport	217.742	32	Private Test - 1
12	17	Carlin Motorsport	GBR	Devlin De Francesco	CAN	R	6º	Dallara F312	Carlin Motorsport	216.868	33	Private Test - 1
13	34	Campos Racing	ESP	Matheus Iorio	BRA			Dallara F312	Campos Racing	216.868	11	Private Test - 2
14	42	RACE	ESP	Eliseo Martinez	ESP	R	7º	Dallara F312	Teo Martin Motorsport	216.868	9	Private Test - 3
15	8	RP Motorsport	ITA	Lodovico Laurini	ITA	R	8º	Dallara F312	RP Motorsport	216.433	6	Private Test - 3
16	22	BVM Racing	ITA	Daniil Pronenko	RUS			Dallara F312	BVM Racing	216.001	8	Private Test - 3
17	12	Drivex School	ESP	Christian Hahn	BRA			Dallara F312	Drivex School	215.569	7	Private Test - 2